



LIVE FOR OTHERS INITIATIVE

N O O N E L E F T B E H I N D

REPORT OF MAHAMA REFUGEE CAMP VISIT ON *APRIL 28TH, 2024*

HEBREWS 13:16

"AND DO NOT FORGET TO DO GOOD AND TO
SHARE WITH OTHERS, FOR WITH SUCH SACRIFICES
GOD IS PLEASED."

PREPARED BY:
ALINE MIHIGO

PHONE NUMBER
502-287-7389

WEBSITE:
[HTTPS://LIFOINITIATIVE.ORG/](https://lifoinitiative.org/)

THANK YOU FOR ALL THE CONTRIBUTIONS AND PRAYERS!



Facts about Mahama Refugee Camp

Did you know that?

- Approximately 60,000 refugees live in the Mahama refugee Camp located in the Kirehe District in the Eastern Province of Rwanda.
 - Out of the Population, 50.2% are younger than 18 years old.

UNHCR: 02, 2023(p.1)



Mahama Refugee Camp(ww.PMVI.gov)

SURVIVAL AND RESILIENCE: LIFE IN MAHAMA REFUGEE CAMP

- Different NGOs provide various programs and services to assist refugees.
 - **The services include monthly cash assistance of 8,500 RWF(~6.6 USD) for highly vulnerable refugees.**
 - **4,200 RWF (~3.24 USD) per month for moderately vulnerable people.**
- NGO's assistance is insufficient to meet refugees' diverse needs, including clothing, adequate nutrition, and household supplies, particularly under challenging circumstances such as hospitalization
- A significant number of individuals classified as self-sufficient do not receive NGO assistance due to ineligibility, resulting in considerable hardship as they struggle to secure employment or alternative means of support.

Your Donations at Work: Mahama Refugee Camp Visit on 4/28/2024



"Thanks to your generous support, we have made significant strides in improving the lives of those in need. Here's a look at how your contributions have made a difference."

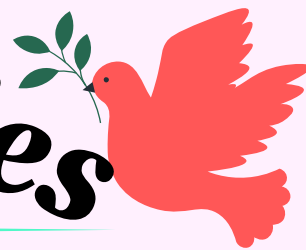
REPORT OF MAHAMA CAMP VISIT on 28/4/2024(cashflow)

Item	# of Families	Amount/ kg	# of Kgs	Total
Total funds raised				2,060,551
Beans	62	700	10	434,000
Cooking Oil(Karungi)	62	2500	1	155,000
Soaps(meru)	62	1500	1	93,000
Maize Flower(kawunga)	62	9000	12.5	558,000
Salt	62	500	1	31,000
Soaps/ Hospital	50	1500	1	75,000
Milk(10 box)/Hospital				85,000
Car rent fee				130,000
Fuel				50,000
Repres.team cocktail				70,000
Team Mahama Support				40000
Total				1,721,000
Balance				339,551(RWF)
Balance				50(USD)
Momo transf.charges				500
Cash on Momo				339,051

- The funds were distributed to vulnerable individuals, with a dedicated team of four from Mahama Refugee Camp receiving 10,000 RWF each for assisting the LIFO Initiative Team. The remaining funds, donated after the events, will be allocated to future LIFO Initiative Programs to enhance the well-being of patients and vulnerable individuals through necessary supplies.*



Impactful Stories



MEET UWINEZA GENTILE

- A resilient young girl aged between 13-15 years old. Recently, tragedy struck her family when a gas explosion claimed the lives of both her parents and one of her siblings. Left with the responsibility of caring for her five remaining siblings, she has bravely stepped into the role of a parent at such a tender age. Despite her remarkable strength, Gentile faces significant challenges in providing for her family's basic needs. Although she is classified as level 1, she is unable to afford essential school supplies for her siblings and other necessities crucial for their well-being and future prospects. Your compassionate support not only ensures their sustenance but also empowers Gentile to nurture her siblings through these challenging times.

INTRODUCING KANYAMBO HERENIDE AND HER HUSBAND

- Resilient elders aged between 75 and 85 years old. Despite not having children, they steadfastly care for each other, with Kanyambo shouldering the responsibility of nursing her husband when he falls ill. Classified as level 1, they require additional support to navigate daily life independently. Thank you for your generosity in making a difference for them.

Presenting Kazembe

- Aged between 23 and 25, he is responsible for caring for his six siblings following the loss of their parents. Despite his efforts, he faces barriers to employment within the refugee camp, resulting in his reclassification to level 3, rendering him ineligible for camp services. Your support through the LIFO initiative has been instrumental in alleviating his struggles and providing essential aid, for which Kazembe extends his heartfelt gratitude.

Presenting Hatungimana Genereuse

- An 85-year-old elder was mistakenly classified as level 3, rendering her ineligible for certain assistance. Living alone, she faces significant challenges. Your support is greatly appreciated in improving her circumstances.

Meet Mama Bahati

- A devoted mother of four with a disabled husband finds herself classified as level 2. Without gainful employment to support her family, she deeply appreciates your generous contribution towards their well-being.

CALL TO ACTION!



JOIN US IN MAKING A DIFFERENCE AT THE UPCOMING LIFO INITIATIVE EVENT ON AUGUST 25, 2024.

Please don't hesitate to contact Claude Twagirimukiza at (502-287-7389) for further details and to continue supporting our mission.